



VISIONARCH Project Phoenix

The new glass gridshell roof transforms this commercial office space, creating a magnificent light infused atrium and reception area

Client

Commercial client,
Entertainment industry

Location

Holborn, London

Architect

Spacelab

Contractor

ISG Fit Out Ltd

Products

1. Glass gridshell atrium roof utilising Schuco Jansen sections
2. DGU toggled glass
3. Aluminium cladding
4. GF curtain walling
5. Sliding doors
6. Bespoke structural glazing

Sector

Commercial / Office

Project value

£700k

Client brief

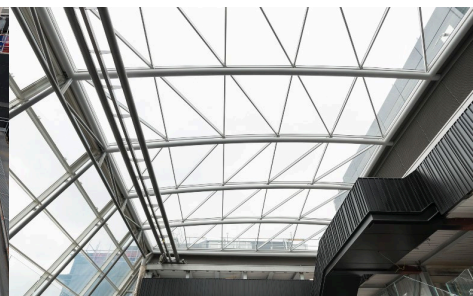
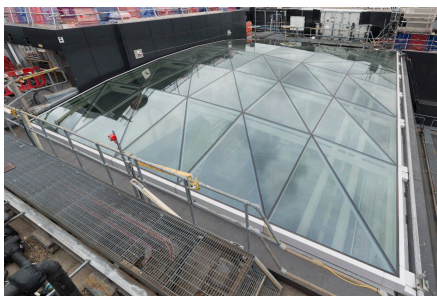
ISG were appointed to carry out the 135,000 sq ft fit out from shell and core to CAT B, from basement to level 9.

M&E plant infrastructure replacement, new internal staircases, new glazed atrium roof and external window replacement at the Site under a JCT Standard Building without Quantities form of contract.

Our scope

Vision Arch were appointed by ISG to carry out the removal of existing ETFE roof, then design, supply and installation of a new 60 panel grid shell roof utilising the existing secondary steelwork.

Bespoke structural glazing to Façade at ground floor and sliding doors and a new lobby entrance with bespoke signage.



Get in touch

☎ 01223 907 850
✉ info@visionarch.co.uk

Vision Architectural Glazing Installations Ltd
The Old Livery, Hildersham
Cambridge CB21 6DD



Key challenges

1. The works were undertaken whilst the building remained in occupation with 2 floors taken out of use and refurbished at a time, on a phased basis.
2. Access to the roof and surrounding perimeter in the busy Theobalds Road in central London.
3. Ground floor curtain walling installation access, with 4-metre-tall pieces of glass with minimal pavement closure.

The result

With the removal of the old ETFE roof which was damaged over the time due to the nature of the product, a new glass gridshell roof was installed with secondary steel supports following a gentle curve with triangulated glass panels creating a magnificent light infused atrium space. The benefit of using glass in the roof rather than replacing the ETFE Roof meant that the 'drumming effect' experienced during heavy rain was removed from the amenity space.

The new structurally glazed entrance façade opens up the reception area to almost a double height space with natural light flooding in for a real expansive feel to it



What we did

100%

Design intent achieved

100%


Delivered on time

100%

Zero snagging & defects



Get in touch

 01223 907 850
 info@visionarch.co.uk

Vision Architectural Glazing Installations Ltd
The Old Livery, Hildersham
Cambridge CB21 6DD