



VISIONARCH Project Floyd

Redevelopment of this iconic landmark, Grade II* listed building, gives it new life & purpose, allowing it to become the heart of the new neighbourhood

Client

Apple Europe Limited

Location

London, SW11

Architect

Foster + Partners

Contractor

ISG

Products

1. Bespoke structural glass entrance lobby screens
2. Bespoke structurally glazed lift shaft
3. Auto sliding doors
4. Bespoke metalwork
5. Removed & replaced existing glass to allow internal fit out

Sector

Commercial / office

Project value

£925k

Client brief

Regarded as an iconic landmark owing to its art deco fittings and status as one of the world's largest brick buildings, Battersea Power Station sat empty for nearly 30 years, after being decommissioned between 1975 and 1983. But today it forms the heart of a new neighbourhood in Battersea.

Apple's new headquarters encompass 500,000 sq. metres, split over six floors at the heart of the Power Station, where up to 3,000 people work in the old boiler house at the Grade II* listed former electricity generator.

The work-spaces were developed to maximise opportunities for collaboration as well as employee wellness, as the six floors of offices surround a large glass-roofed atrium lined with trees.

The floors are linked by bridges and incorporate brick-lined balconies.

Our scope

Two bespoke structural glass entrance lobby screens, comprising of bespoke three-ply laminate single glass panes, with double automated sliding entrance doors using Tormax iMotion 2401 operators. Clad in dark bronze Kikukawa panels.

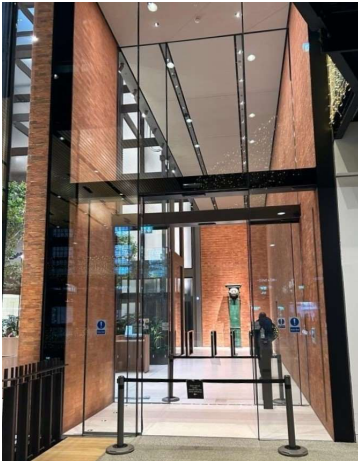
Fixed two-ply laminated structural glazed lift shaft with Sevesa glazing, structurally bonded to stainless steel carrier frame.

Auto sliding doors | Structurally glazed lift shaft screens
Structurally glazed entrance screens | Bespoke metalwork
And, removed & replaced existing glass to allow internal fit out

Get in touch

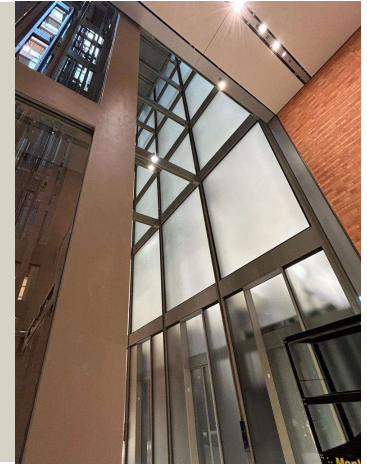
☎ 01223 907 850
✉ info@visionarch.co.uk

Vision Architectural Glazing Installations Ltd
The Old Livery, Hildersham
Cambridge CB21 6DD



Key challenges

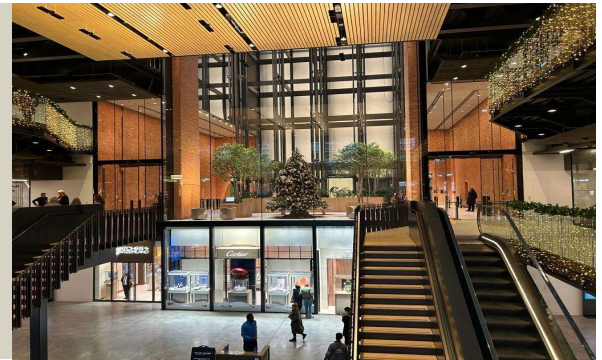
1. Delivering materials of this size and weight to site poses significant difficulties, however, our on-site team co-ordinated successfully with all concerned to achieve this.
2. Engineered sliding door glass connection to operator to achieve minimal sight lines to enhance transparency
3. Bespoke engineering for the entrance glass utilising mechanical fixing and structural bonding to achieve design intent.



The result

Seamless elegant entrance screens and fixed lift glazing was achieved using complex engineering solutions, in keeping with the high quality expected and maintained throughout the building.

Coordinating with other trades to ensure precise and minimal gaps between interfacing materials.



What we did

100%

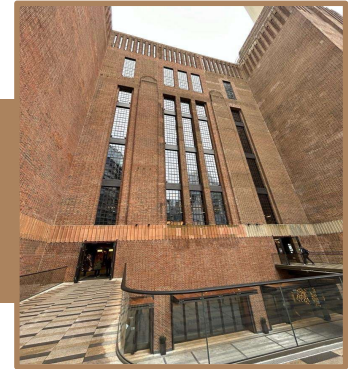
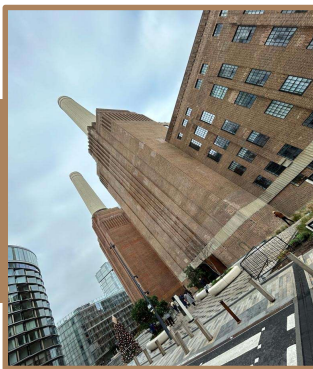
Snag free on handover

100%

Delivered on time, to budget

100%

Achieved client design



I speak for all the team when I say; we would happily work with Vision Arch again. An extremely professional, proactive & efficient company which provides a high level of service.”

Sam Williams, Construction Manager - ISG

Get in touch

☎ 01223 907 850
✉ info@visionarch.co.uk

Vision Architectural Glazing Installations Ltd
The Old Livery, Hildersham
Cambridge CB21 6DD