



# 100 Bishopsgate / 15 St Helen's Place

Where old historical buildings meet the new, modern and contemporary facades of today, in the heart of the City of London

## Client brief

Forming part of the 100 Bishopsgate Project, St Helen's Place Conservation Area to the south of the development includes two ancient churches with fabric pre-dating the Great Fire of London in 1666.

On the tower side of the 15 St Helen's Place building is a modern facade incorporating both fire and blast resistant curtain walling as well as standard curtain walling, and on the St Helen's Place Conservation Area heritage windows were installed.

## Our scope

Vision Arch were engaged to carry out the design development, supply, fabrication, installation, testing and commissioning of the complete curtain walling, bronze and louvre package.

Vision Arch constructed a full-scale offsite 10 x 6m visual mock-up to replicate the ground floor bomb blast curtain walling and first floor fire-rated / non-fire-rated glazing. Following the sign-off of the visual mock-up, a performance mock-up was erected at Wintech to carry out a full CWCT impact, water, wind and air tightness testing. The north elevation, levels 1-5, comprised fire-rated and non-fire-rated Schuco vertical glass curtain walling with architectural deep feature caps, finished in a bronze anodised aluminium.

Curtain walling to ground level was constructed with 200 x 100mm Steel Hollow Section (SHS) cloaked in bespoke bronze anodised extrusion. Specialist bronze BMA toned and waxed cladding to 'Sky Bosk' / cycle store. South elevation incorporates bespoke bronze cladding to the main entrance glazed DDA door. Fixed louvre to the south elevation retained facade. Janisol Arte 15 profiled windows to south elevation.

**Client**  
Brookfield

**Location**  
London EC3A

**Architect**  
Allies & Morrison

**Contractor**  
Multiplex

**Surveyor**  
Gardiner & Theobald

- Products**
1. Schuco FWS 50  
Capped Curtain Wall
  2. Schuco VISS EI60 Fire  
Rated Curtain Wall
  3. Bespoke Blast  
Resilient SG Curtain  
Wall
  4. Schuco Janisol Arte  
15 Heritage Windows
  5. Architectural  
Metalwork / Bronze  
Cladding
  6. DDA Underfloor  
Operated Pass Door
  7. Multiple New  
Bespoke Extrusions
  8. Ventilation Louvres

**Sector**  
Commercial / Office

**Completed**  
2019

**Get in touch**

☎ 01223 907 850  
✉ [info@visionarch.co.uk](mailto:info@visionarch.co.uk)

Vision Architectural Glazing Installations Ltd  
The Old Livery, Hildersham  
Cambridge CB21 6DD



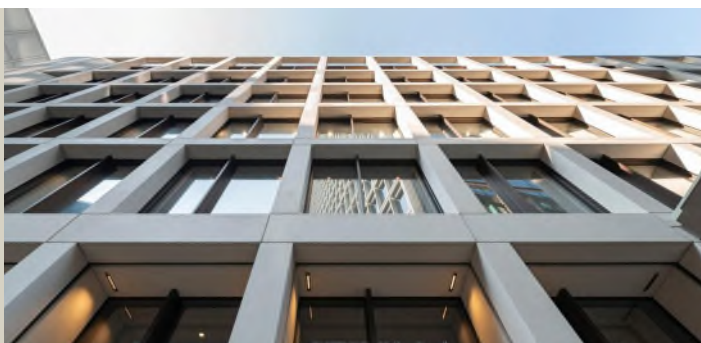
## Key challenges

1. Project required a bespoke large-format blast resilient facade. To overcome this, we had to carry out extensive static and dynamic structural modelling which required the use of heavy steel RHS sections which, in turn, had to be overlaid with multiple new bespoke aluminium extrusions to maintain the overall architectural design intent.
2. Installation of the large bomb blast curtain walling which is logistically challenging for installation on a tight city centre site.
3. The creation of an on-site tented chamber to provide a warm and dust free environment for the application of the structural silicone during winter months.

## The result

As you can see from the photographs, a quite stunning modern north facade that looks identical despite using variable systems: standard, fire and blast resilient.

In comparison the south retained facade now has modern high thermally performing windows and doors whilst still maintaining slim heritage window sight lines.



**"In our opinion, Vision Arch's work was carefully considered and detailed in the design phase and the finish they achieved on site was highly commendable. This helped to achieve a successful commercial outcome for the client with a good proportion of the building being let prior to completion."**

Mark Foster – Allies & Morrison

## What we did

# 100%

BREEAM Excellent achieved

# 100%

Health & Safety record

# 100%

Delivered on time