

VISIONARCH

Worthing Pools

The main hall acts as a viewfinder, connecting the street with the seafront, and the building terminates in a series of glazed facades directly overlooking the water

Client
Worthing
Borough Council

Location
Worthing

Architect
WilkinsonEyre

Contractor
Morgan Sindall

Surveyor
Davis Langdon

- Products**
1. Schuco FWS 50 Capped Curtain Wall
 2. (Glulam Timber Columns and Beams)
 3. Brise Soleil
 4. Schuco AWS 50 Aluminium Windows
 5. Frameless Structural Glazing
 6. Schuco VISS EI60 Fire Rated Curtain Wall
 7. Automatic Bi-Parting Sliding Doors

Sector
Leisure

Completed
2013

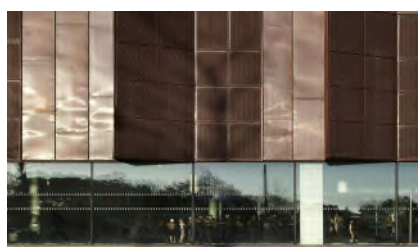
Client brief

A new swimming pool for Worthing Borough Council following an RIBA competition. The new complex includes a six-lane, 25-metre pool, a combined learner / diving pool, indoor leisure pools with rapids, flumes and outdoor waters, a health and fitness centre, café, crèche and flexible space for other activities.

The main pool hall acts as a viewfinder, connecting the street with the seafront, and the building terminates in a series of glazed facades directly overlooking the water. This device creates a striking internal space awash with natural daylight. The environment was challenging – the saline coastal context, coupled with the chlorine-rich pool area, made for a harsh context.

Our scope

Vision Arch were employed to carry out the design development, supply, fabrication, installation and testing of the internal and external curtain walling incorporating, hit and miss glulam beams, and Brise Soleil. We provided frameless structural glazing to the west wall along with high level clerestory glazing running the length of the pools. Various compartment areas included fire rated glazing from the Schuco VISS system. The viewing area on level 1 included a frameless glass balustrade.



Get in touch

☎ 01223 907 850
✉ info@visionarch.co.uk

Vision Architectural Glazing Installations Ltd
The Old Livery, Hildersham
Cambridge CB21 6DD



Key challenges

1. Protecting the glulam timber beams during construction from the coastal weather conditions throughout the winter months.
2. Ensuring crane lifts are carried out in a safe manner when installation is taking place during periods of inclement weather.

The result

The glulam timber provided a versatile engineered wood that endorsed strength, beauty and reliability. Coupled with the slimline profiles of the Schuco Aluminium glazing system, it presented a picture-perfect viewfinder to achieve the design intent.



What we did

100%

Top 3 Health & Safety
during installation
phase

100%

Achieving
design intent

100%

Within budget